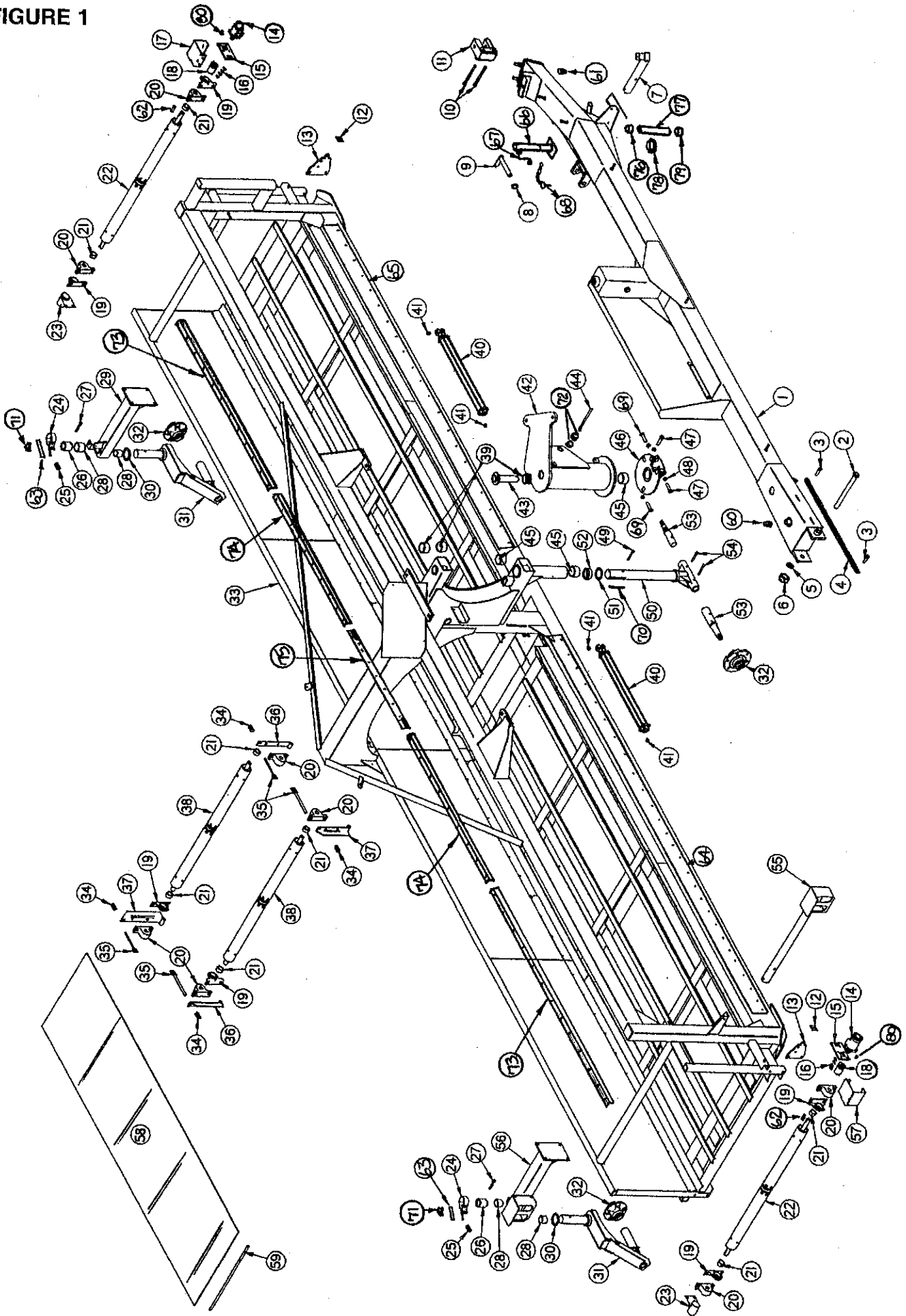




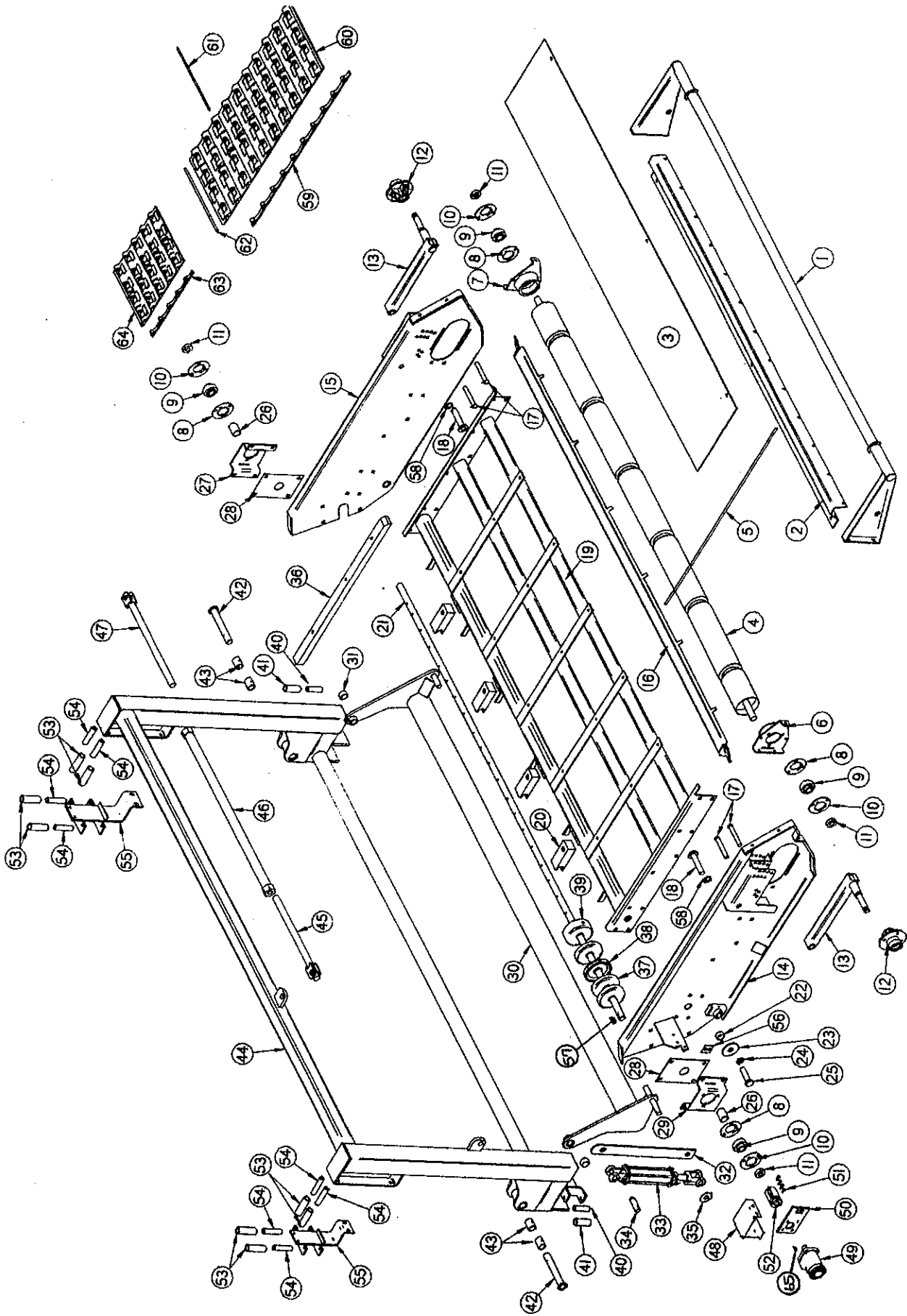
FIGURE 1



**FIGURE 1**  
**H&S TWIN MERGER MAIN FRAME**

ITEM	PART NO.	DESCRIPTION	ITEM	PART NO.	DESCRIPTION
1.	DWM20	Pole	35.	DWM25	Tightener
2.	DWM33	Pole Pin	36.	DWM23	Tightener
3.	DWM166	Bolt 1/2"x2" GR.8	37.	DWM24	Back Left Tightener
4.	DWM142	Chain	38.	DWM13	Conveyor Roller
5.	RG138	Washer 1-1/4" Internal	39.	RG26	Bushing-Steel
6.	RG139	Nut 1-1/4"-12	40.	DWM75	Cylinder
7.	DWM38	Light Bracket	41.	DWM141	Spacer 1/2"
8.	F56	Lynch Pin	42.	DWM16	Steering Pivot
9.	DWM34	Pole Locking Pin	43.	DWM18	Steering Pin
10.	50N129	Bolt 3/4"x6" GR.5	44.	DWM72	Bolt-Ready Rod
11.	WM43	Hitch-Adjustable	45.	B58	Bushing-Phenolic
12.	DWM45	Motor Spacer	46.	DWM17	Steering Flange
13.	DWM51	Male Torque Arm	47.	DWM168	Bolt 3/4"x4" GR.5 Full Thread
14.	DF1	Hydraulic Motor	48.	DWM169	Nut 3/4" Coarse Thread Jam
15.	DWM39	Torque Arm	49.	DWM170	Bolt 3/8"x5" GR.5
16.	DWM137	Cap Screw-Coupler	50.	DWM15	Steering Fork
17.	DWM41	Left Motor Shield	51.	DWM73	Bronze Washer 3"ID
18.	DWM27	Coupler	52.	DWM49	Steel Washer
19.	DWM36	Anti-Wrap Guard	53.	DWM60	Spindle
20.	DWM132	Bearing (Pillow Block)	54.	DWM172	Bolt 3/8"x3-1/2" GR.5
21.	DWM57	Spacers	55.	DWM37	Right Rear Light Bracket
22.	DWM14	Drive Roller	56.	DWM19	Tail Wheel
23.	DWM31	Shaft Shield	57.	DWM42	Right Motor Shield
24.	WM207	Brake Band	58.	DWM160	Cross Conveyor Belt
25.	WM210	Spring-Red	59.	DWM161	Cross Conveyor Lacing Pin
26.	DWM59	Brake Bushing	*	DWM162	Cross Conveyor Lacing
27.	BFR313	Roll Pin 5/16"x2-3/4"	60.	DWM158	1" Black Pipe Plug
28.	BFR527	Bushing 2"IDx2-1/4"ODx2"	61.	DWM159	3/4" Black Pipe Plug
29.	DWM35	Left Tail Wheel	62.	G23	Key 5/16"x1-3/8" Sq.
30.	RG24	Bronze Washer 2"IDx3"ODx1/8"	63.	WM208	Brake Pad
31.	DWM26	Casters	64.	DWM70	Right Belt
32.	RG101	Hub-Road Wheels	65.	DWM71	Left Belt
*	RG98	Seal	66.	DWM124	Jack 2000#
*	RG99	Inner Bearing	67.	12N12	Jack Handle
*	RG100	Inner Race	68.	BFR4	Jack Pin & Chain
*	RG102	Stud Bolt	69.	DWM173	Bolt 3/4"x3" GR.5 Full Thread
*	BFR144	Nut	70.	DWM126	1/2"x2-1/2" Sq. Key W/Round Ends
*	RG47	Outer Race	71.	WM211	Brake Angle
*	RG48	Outer Bearing	72.	RG132	Bushing 1-1/4"IDx2"
*	DWM121	Washer	73.	DWM44	Skirt
*	RG103	Hub Cap	74.	DWM46	Short Skirt
*	DWM74	Wheel-Heavy (Front)	75.	DWM47	Middle Skirt
*	DWM164	Tire-Heavy (Front) 11Lx15 LRF	76.	S414	Cap
*	12N24	Wheel-Light (Rear)	77.	S415	Tube
*	DWM163	Tire-Light (Rear) 11Lx15 8 Ply	78.	S416	Hanger Bracket
*	B3	7/8" Slotted Nut	79.	S418	Cap W/Hole
*	B31	5/32"x1-3/4" Cotter Key	80.	5B10	Key 1/4"x1" Woodruff
33.	DWM22	Frame	* (Means Not Shown)		
34.	DWM125	Spring-Blue			

FIGURE 2



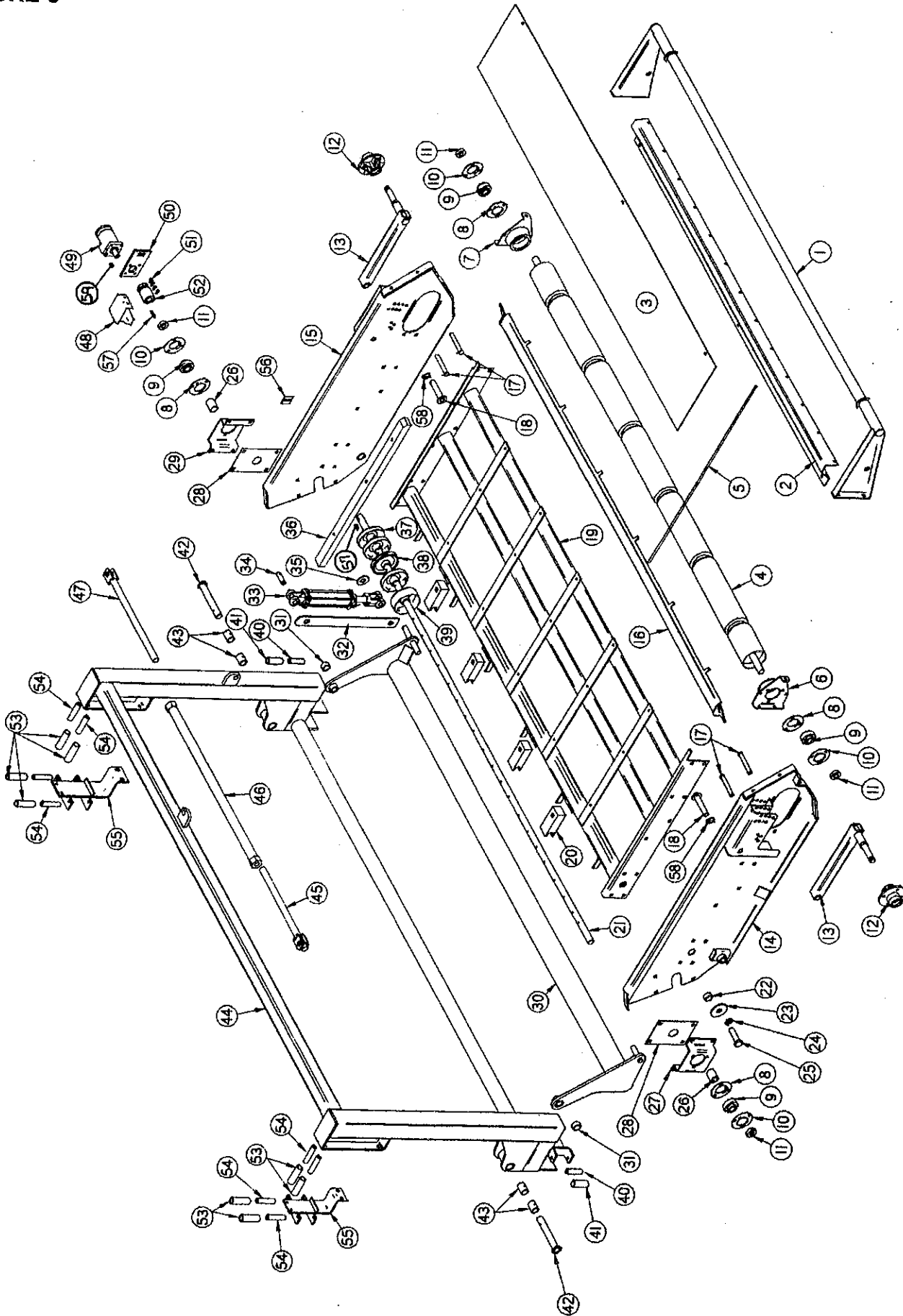
**FIGURE 2  
H&S TWIN MERGER LEFT PICK-UP HEAD**

ITEM	PART NO.	DESCRIPTION	ITEM	PART NO.	DESCRIPTION
1.	DWM1	Wind Guard	29.	WM187	Bearing Bracket RH
2.	DWM2	Double Wind Guard	30.	DWM10	Left Pickup Lifter
3.	DWM58	Poly Wind Guard	31.	DWM57	Spacer
4.	WM34	Front Roller	32.	DWM50	Transport Lock
5.	WM60	Wind Guard Rods	33.	BFR69	Hydraulic Cylinder
6.	WM179	Right Roller Adjustment Bracket	34.	DWM56	Cylinder Pin
7.	WM192	Left Roller Adjustment Bracket	35.	16SV136	Washer
8.	F145	Flange	36.	WM219	Slides
9.	WM29	Bearing	37.	WM11	Pulley, Flat 1" Wide
10.	F143	Flange (Greaseable)	38.	WM12	Pulley, V
11.	WM27	Lock Collar 1/1/4"ID W/Set Screw	39.	WM13	Pulley, Flat 2" Wide
12.	CAT177	Hub-Complete	40.	DWM55	Short Slider Spacer
*	CAT135A	Seal	41.	DWM67	Short Back Slider Roller
*	CAT10	Bearing (2)	42.	DWM21	Head Pin
*	CAT9	Race (2)	43.	RG132	Bushing 1-1/4"IDx2"
*	CAT128	Stud	44.	DWM11	Left Head Slide
*	BFR144	Lug Nut	45.	DWM30	Right Jack
*	BFR65	Cotter Pin	46.	DWM28	Jack
*	CAT13	Hub Cap	47.	DWM29	Left Jack
*	CAT211	Wheel 8 x 7 (5 Bolt)	48.	DWM43	Left Head Shield
*	CAT166	Tire 18.5 x 8.5 x 8	49.	DWM84	Hydraulic Motor
*	CAT12	Spindle Nut	50.	DWM39	Hydraulic Motor Mount
*	CAT52	Tire/Wheel Assembly	51.	DWM137	Cap Screw-Coupler
13.	DWM8	Gauge Arms	52.	DWM27	Coupler
14.	DWM4	Left Head-Right Panel	53.	DWM66	Back Slider Roller
15.	DWM3	Left Head-Left Panel	54.	DWM54	Slider Spacer
16.	WM122	Bottom Roller Scraper	55.	DWM32	Hanger Slide
17.	DWM127	Clevis Pins 1/2"x5"	56.	DWM45	Motor Spacer
18.	DWM7	Pivot Pin	57.	G12	Key 5/16"x1" Woodruff Key
19.	WM184	Z-Channel	58.	F56	Lynch Pin
20.	WM15	Wood Bearing (4)	59.	WM31	Belt, V
21.	WM181	Back Roller Drive Shaft	60.	WM196	Pickup Belt Section
22.	WM183	Pivot Bushing	61.	WM35A	Rod, Finger 3/8"ODx17-3/8"
23.	WM218	Washer	62.	WM38A	Splice Wire .141 Dia.x18"
24.	DWM171	1" Lock Washer	63.	WM195	1/2 Belt, V
25.	DWM177	Bolt 1"x2-1/2" GR.5 Full Thread	X 64.	WM194A	Pickup Belt 1/2 Section
26.	WM185	Spacer PVC	65.	5B10	1/4"x1" Woodruff Key
27.	WM186	Bearing Bracket LH			
28.	WM180	Side Panel Slot Plate			

\* (Means Not Shown)

*Dwm 359 belt only  
plastic teeth  
Repair DWM373  
ket*

FIGURE 3



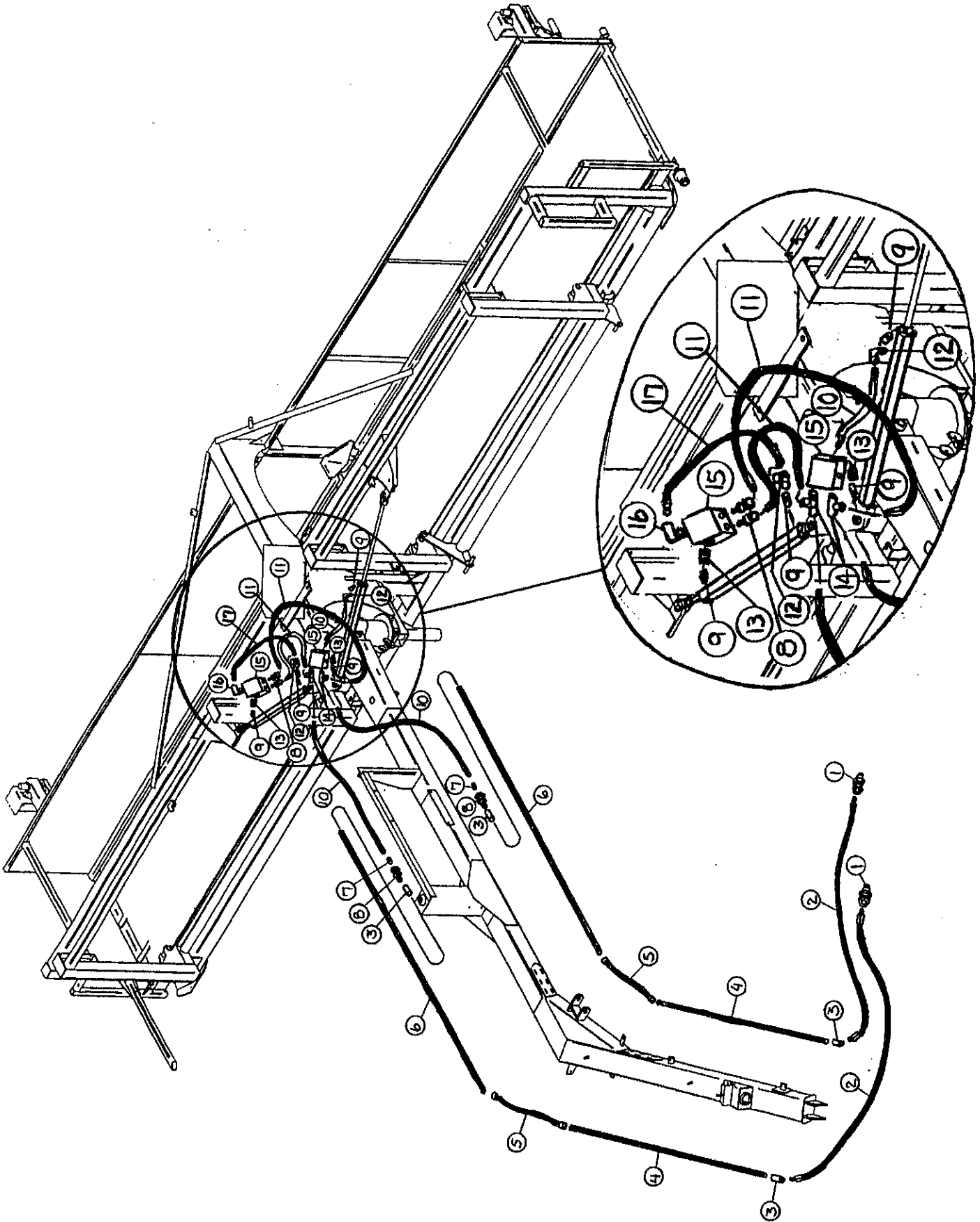
**FIGURE 3  
H&S TWIN MERGER RIGHT PICK-UP HEAD**

ITEM	PART NO.	DESCRIPTION
1.	DWM1	Wind Guard
2.	DWM2	Double Wind Guard
3.	DWM58	Poly Wind Guard
4.	WM34	Front Roller
5.	WM60	Wind Guard Rods
6.	WM179	Right Roller Adjustment Bracket
7.	WM192	Left Roller Adjustment Bracket
8.	F145	Flange
9.	WM29	Bearing
10.	F143	Flange (Greaseable)
11.	WM27	Lock Collar 1-1/4"ID W/Set Screw
12.	CAT177	Hub-Complete
*	CAT135A	Seal
*	CAT10	Bearing (2)
*	CAT9	Race (2)
*	CAT128	Stud
*	BFR144	Lug Nut
*	BFR65	Cotter Pin
*	CAT13	Hub Cap
*	CAT211	Wheel 8x7 (5 Bolt)
*	CAT166	Tire 18.5x8.5x8
*	CAT12	Spindle Nut
*	CAT52	Tire/Wheel Assembly
13.	DWM8	Gauge Arms
14.	DWM6	Right Head-Right Panel
15.	DWM5	Right Head-Left Panel
16.	WM122	Bottom Roller Scraper
17.	DWM127	Clevis Pins 1/2"x5"
18.	DWM7	Pivot Pin
19.	WM184	Z-Channel
20.	WM15	Wood Bearing (4)
21.	WM181	Back Roller Drive Shaft
22.	WM183	Pivot Bushing
23.	WM218	Washer
24.	DWM171	1" Lock Washer
25.	DWM177	Bolt 1"x2" GR.5 Full Thread
26.	WM185	Spacer PVC
27.	WM187	Bearing Bracket RH
28.	WM180	Side Panel Slot Plate
29.	WM186	Bearing Bracket LH
30.	DWM9	Left Pickup Lifter
31.	DWM57	Spacer
32.	DWM50	Transport Lock
33.	BFR69	Hydraulic Cylinder
34.	DWM56	Cylinder Pin
35.	16SV136	Washer
36.	WM219	Slides
37.	WM11	Pulley, Flat 1" Wide
38.	WM12	Pulley, V
39.	WM13	Pulley, Flat 2" Wide
40.	DWM55	Short Slider Spacer
41.	DWM67	Short Back Slider Roller
42.	DWM21	Head Pin
43.	RG132	Bushing 1-1/4"IDx2"
44.	DWM12	Right Head Slide
45.	DWM30	Right Jack
46.	DWM28	Jack
47.	DWM29	Left Jack
48.	DWM40	Head Shield
49.	DWM84	Hydraulic Motor
50.	DWM39	Hydraulic Motor Mount
51.	DWM137	Cap Screw-Coupler
52.	DWM27	Coupler
53.	DWM66	Back Slider Roller
54.	DWM54	Slider Spacer
55.	DWM32	Hanger Slide
56.	DWM45	Motor Spacer
57.	G12	Key 5/16"x1" Sq.
58.	F56	Lynch Pin
59.	5B10	1/4"x1" Woodruff Key

\* (Means Not Shown)

NOTE: See Figure 2 for Pick-Up Belt Parts

FIGURE 4



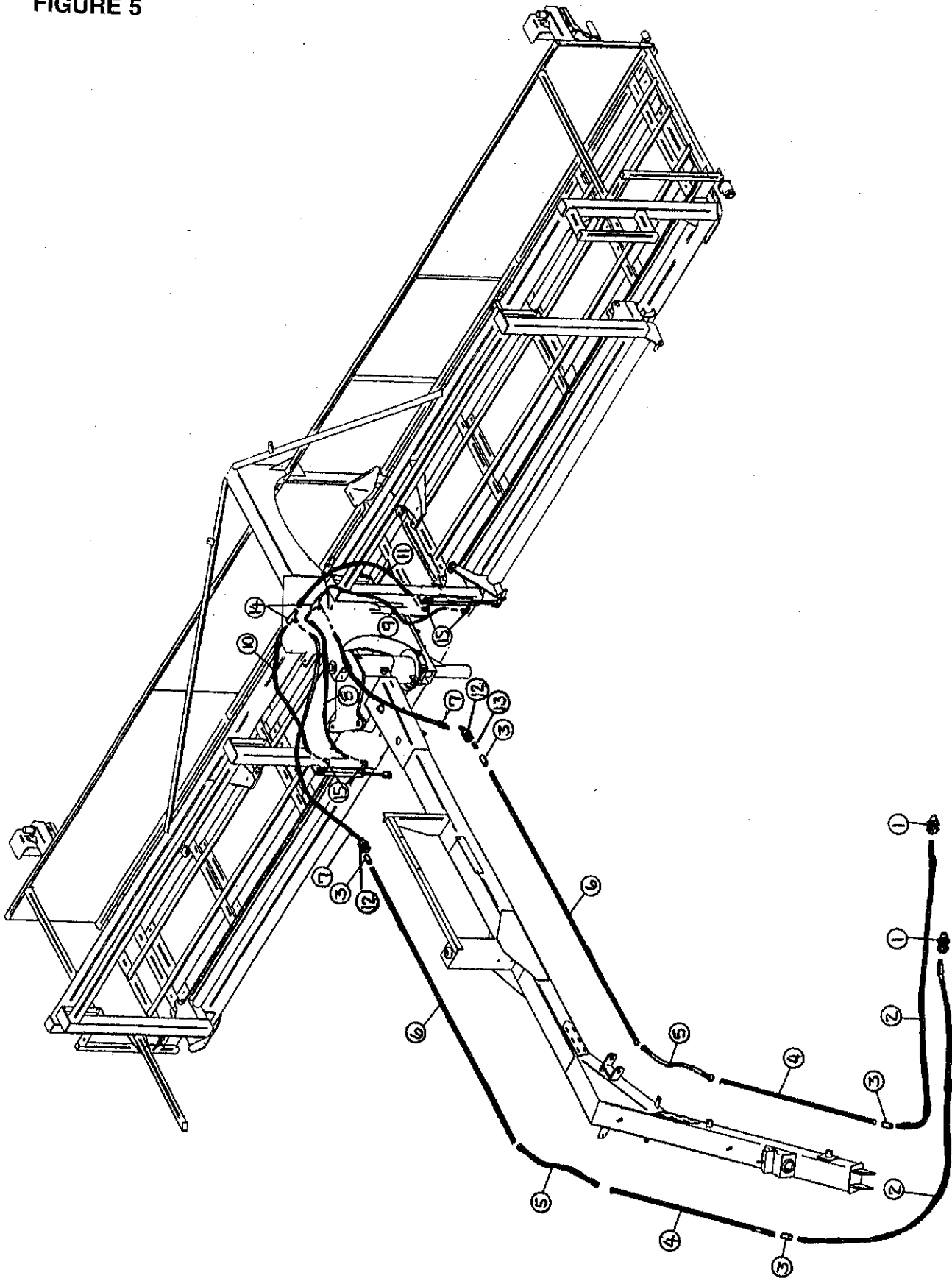


**FIGURE 4**  
**H&S TWIN MERGER POLE CIRCUIT HYDRAULICS**

ITEM	PART NO.	DESCRIPTION
1.	DWM205	Male Couplers
2.	DWM85	Hose 1/4"x66"
3.	HE60	3/8" Pipe Coupler
4.	DWM63	Hydraulic Line
5.	DWM149	Hose 1/4"x24"
6.	DWM62	Hydraulic Line
7.	DWM135	Orifice .094
8.	BFR122	3/8" Adapter Union
*	DWM136	Adapter Union W/Orifice
9.	JB82	3/8" to 1/2" Reducer
10.	DWM92	Hose 1/4"x30"
11.	DWM88	Hose 1/4"x60"
12.	DWM110	3/8" Male to Female 90 Degree Swivel
13.	16SV351	3/8" Nipple Nut
14.	23N116	3/8" Street Tee
15.	WM176	Sun Pole Lock Valve
16.	23N234	3/8" Street Elbow
17.	DWM94	Hose 1/4"x42"

\* (Means Not Shown)

FIGURE 5

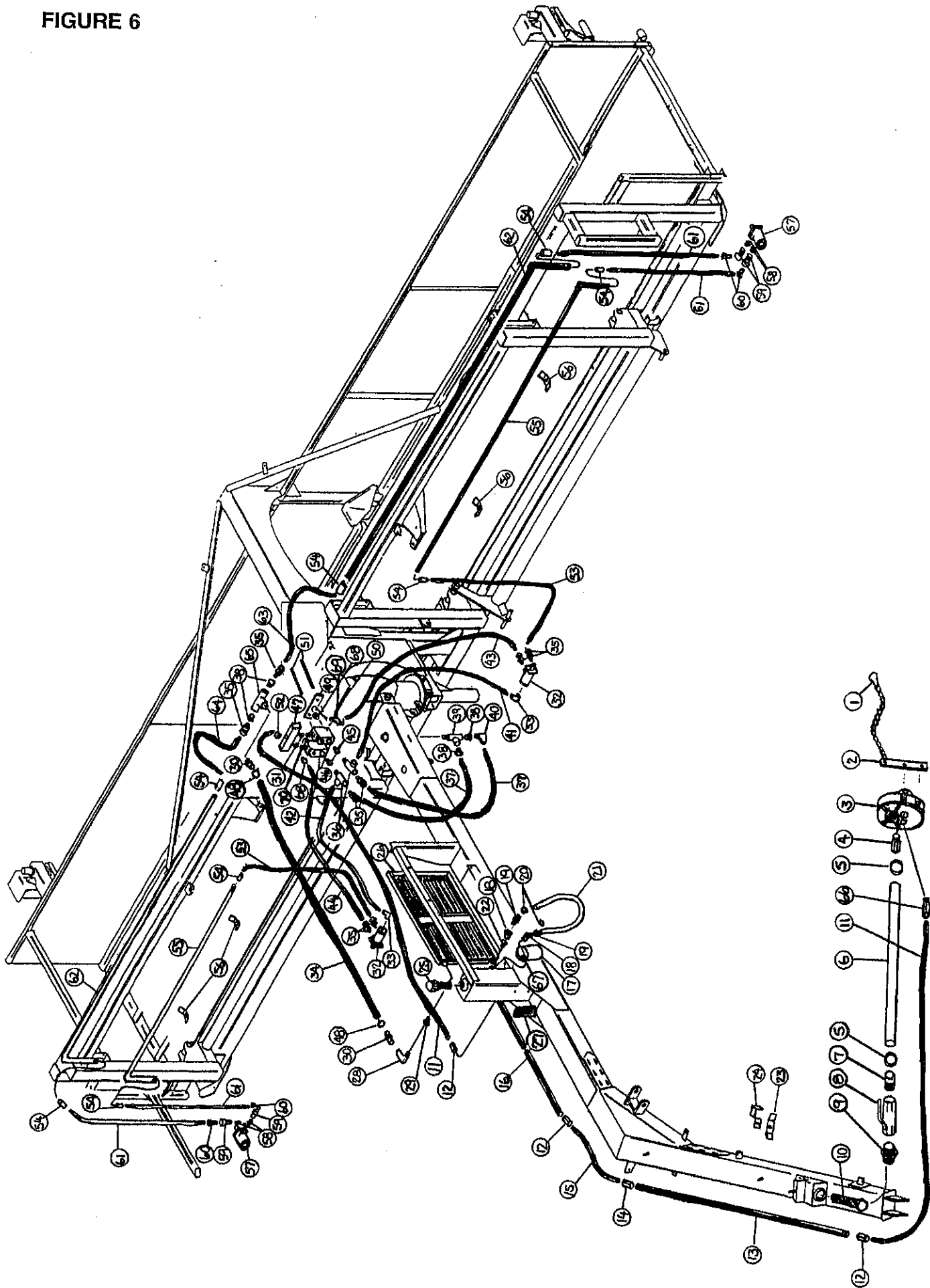


**FIGURE 5**  
**H&S TWIN MERGER MANUAL HEAD HYDRAULICS**

<b>ITEM</b>	<b>PART NO.</b>	<b>DESCRIPTION</b>
1.	DWM205	Male Couplers
2.	DWM85	Hose 1/4"x66"
3.	HE60	3/8" Pipe Coupler
4.	DWM63	Hydraulic Line
5.	DWM149	Hose 1/4"x24"
6.	DWM62	Hydraulic Line
7.	DWM86	Hose 1/4"x44-1/2"
8.	DWM88	Hose 1/4"x60"
9.	DWM89	Hose 1/4"x78"
10.	DWM87	Hose 1/4"x70"
11.	DWM90	Hose 1/4"x66"
12.	BFR122	3/8" Adapter Union
13.	DWM135	Orifice .094
*	DWM136	Adapter Union W/Orifice
14.	BFR74	3/8" Tee
15.	DWM110	3/8" Male to 3/8" Female 90 Degree Swivel

\* (Means Not Shown)

FIGURE 6

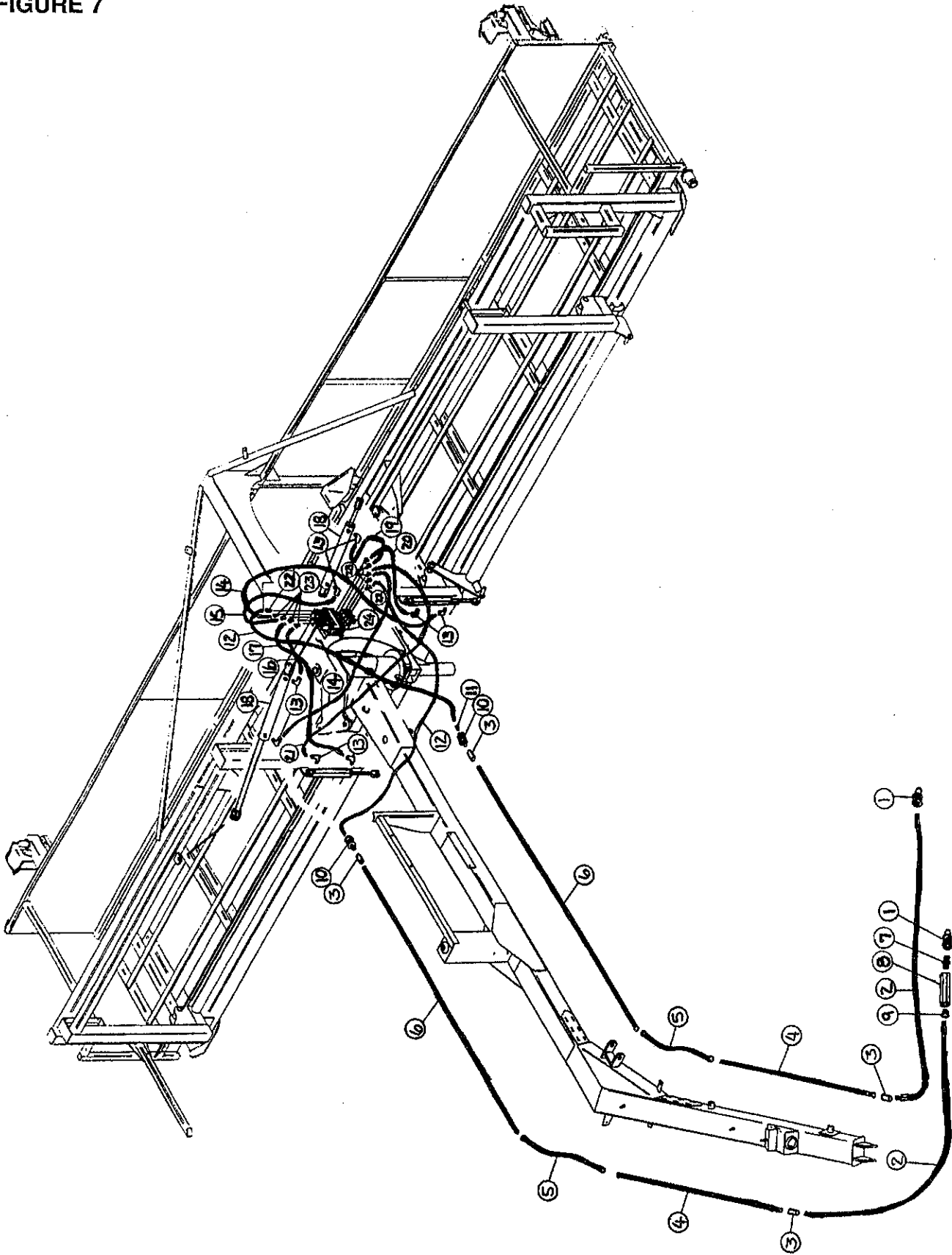


**FIGURE 6  
H&S TWIN MERGER MAIN FRAME HYDRAULICS**

ITEM	PART NO.	DESCRIPTION	ITEM	PART NO.	DESCRIPTION
1.	BFR295	Snap Hook	36.	16SV352	1/2" Street Tee
2.	DWM77	Torque Arm	37.	DWM106	Hose 1/2"x33"
3.	DWM76	Hydraulic Pump #4H31	38.	DWM112	1" to 1/2" Reducer
4.	DWM91	1-5/8" O-Ring to 2" Pipe Reducer	39.	DWM113	1" Street Tee
5.	DWM122	2" Hose Clamp	40.	HE58	1/2" Street Elbow
6.	DWM97	Hose 2"x31"	41.	DWM107	Hose 1/4"x84"
7.	DWM144	2" Hose Barb	42.	DWM108	Hoe 1/4" to 56"
8.	DWM83	2" Ball Valve	43.	DWM100	Hose 1/2"x77"
9.	DWM147	2" Close Nipples	44.	DWM105	Hose 1/2"x63"
10.	DWM80	Strainer-Sump	45.	LW99	3/4" to 1/2" Reducer
11.	DWM98	Hose 1"x48"	46.	DWM148	3/4" to 1/2" Reducer
12.	DWM109	1" Union Adapter W/Swivel	47.	DWM79	Flow Divider
13.	DWM65	Hydraulic Line	48.	DWM123	1" Hose Clamp
14.	DWM146	1" Pipe Coupler	49.	DWM53	Flow Control Tie Bar
15.	DWN99	Hose 1"x24'	50.	DWM69	Flow Control Mount
16.	DWM64	Hydraulic Line	51.	DWM68	Handle Rod
17.	STM23	Filter	52.	DWM120	1-5/16" O-Ring to 1" Pipe Reducer
18.	DWM118	1-1/4" Street elbow 45 Degree	53.	DWM101	Hose 1/2"x49"
19.	DWM143	1-1/4" Hose Barb	54.	PB105	1/2" Pipe Coupling
20.	DWM138	1-1/4" Hose Clamp	55.	DWM61	Hydraulic Line
21.	DWM95	Hose 1-1/4"x10" Return	56.	23N67	Pipe Clamp
22.	DWM117	1-1/2" to 1-1/4" Reducer	57.	DF1	Hydraulic Motor
23.	DWM52	Hose Clamp	58.	WM141	1/2" Nipple Nut
24.	DWM48	Pipe Holder	59.	DWM206	Female Coupler
25.	DWM81	Strainer-Filler	60.	DWM205	Male Coupler
26.	DWM78	Oil-Cooler Double	61.	DWM102	Hose 1/2"x25"
27.	DWM204	Oil Level Gauge	62.	DWM61	Hydraulic Line
28.	DWM115	1" Street Elbow	63.	DWM103	Hose 1/2"x40"
29.	DWM116	1-1/2" to 1" Reducer	64.	DWM104	Hose 1/2"x19"
30.	DWM145	1" Hose Barb	65.	DWM114	1" Tee
31.	DWM111	1-1/16" O-Ring to 3/4" Pipe Reducer	66.	DWM120	1-5/1" O-Ring to 1" Pipe Reducer
32.	DWM84	Hydraulic Motor	67.	DWM82	Filter Base
33.	DWM119	7/17" O-Ring to 3/8" 90 Deg.Union Adapter	68.	LW99	3/4" to 1/2" Reducer
34.	DWM96	Hose 1"x148" Return	69.	LW187	1/2" Street Elbow 45 Degree
35.	LW174	1/2" Male Union Adapter	70.	LW98	3/4" Nipple Nut

\* (Means Not Shown)

FIGURE 7

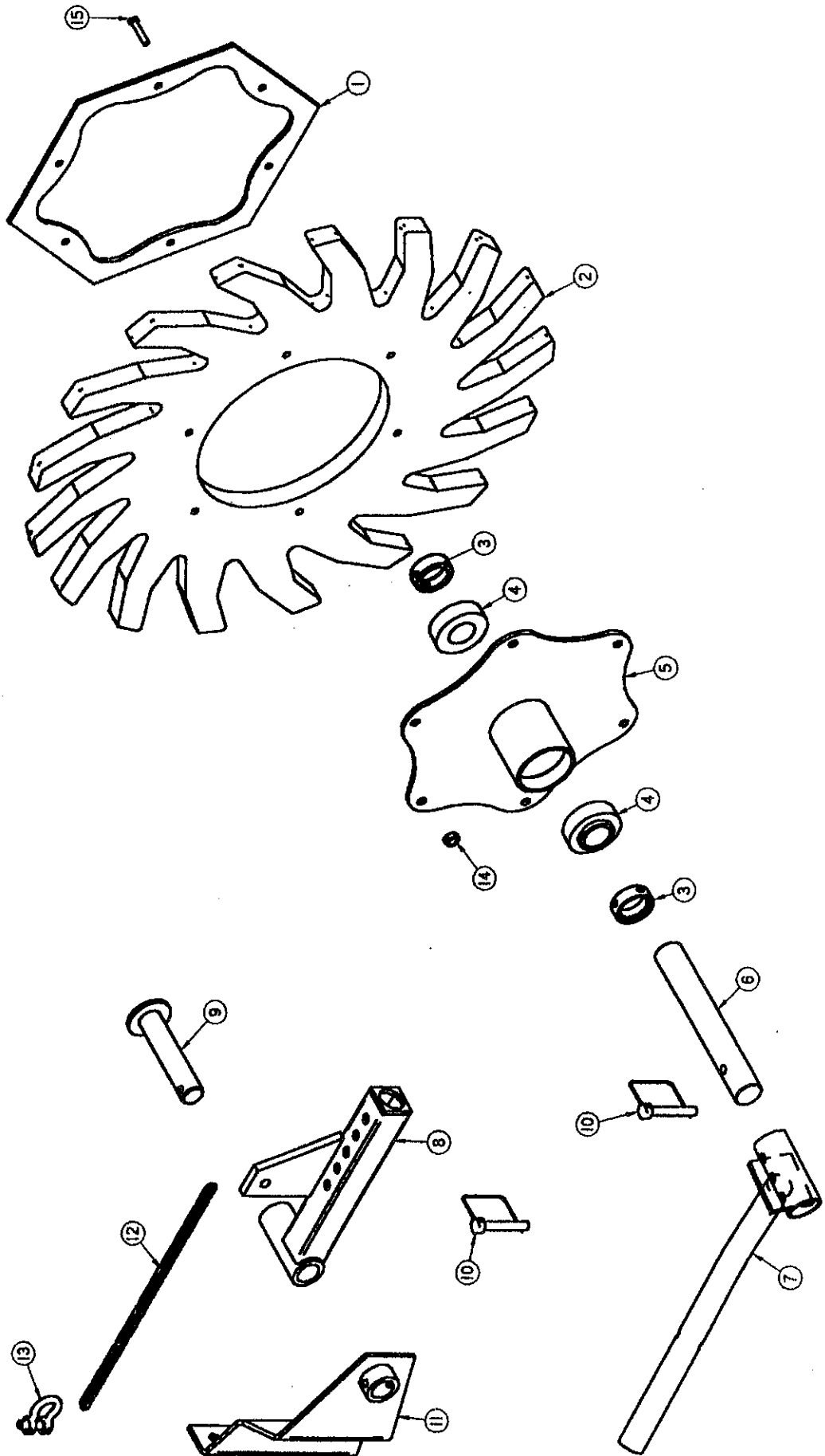


**FIGURE 7**  
**H&S TWIN MERGER OPTIONAL ELECTRIC HEAD**

<b>ITEM</b>	<b>PART NO.</b>	<b>DESCRIPTION</b>
1.	DWM205	Male Couplers
2.	DWM85	Hose 1/4"x66"
3.	HE60	3/8" Pipe Coupler
4.	DWM63	Hydraulic Line
5.	DWM149	Hose 1/4"x24"
6.	DWM62	Hydraulic Line
7.	WM141	1/2" Nipple Nut
8.	DF18	1/2" Check Valve
9.	PB105	1/2" Pipe Coupler
10.	BFR122	3/8" Adapter Union
11.	DWM135	Orifice .094
*	DWM136	Adapter Union W/Orifice
12.	DWM88	Hose 1/4"x60"
13.	DWM110	3/8" Street Elbow W/90 Degree Swivel
14.	DWM89	Hose 1/4"x78"
15.	DWM154	Hose 1/4"x24"
16.	DWM155	Hose 1/4"x38"
17.	DWM157	Hose 1/4"x96"
18.	DWM152	Cylinder
19.	DWM156	Hose 1/4"x56"
20.	DWM90	Hose 1/4"x66"
21.	DWM93	Hose 1/4"x90"
22.	DWM153	7/8" O-Ring to 3/8" Pipe Adapter
23.	WM148	3/4" O-Ring to 3/8" Pipe Adapter
24.	DWM150	Electric Solenoid Valve
*	DWM151	Optional Plug for Open Center Tractors

\* (Means Not Shown)

FIGURE 8



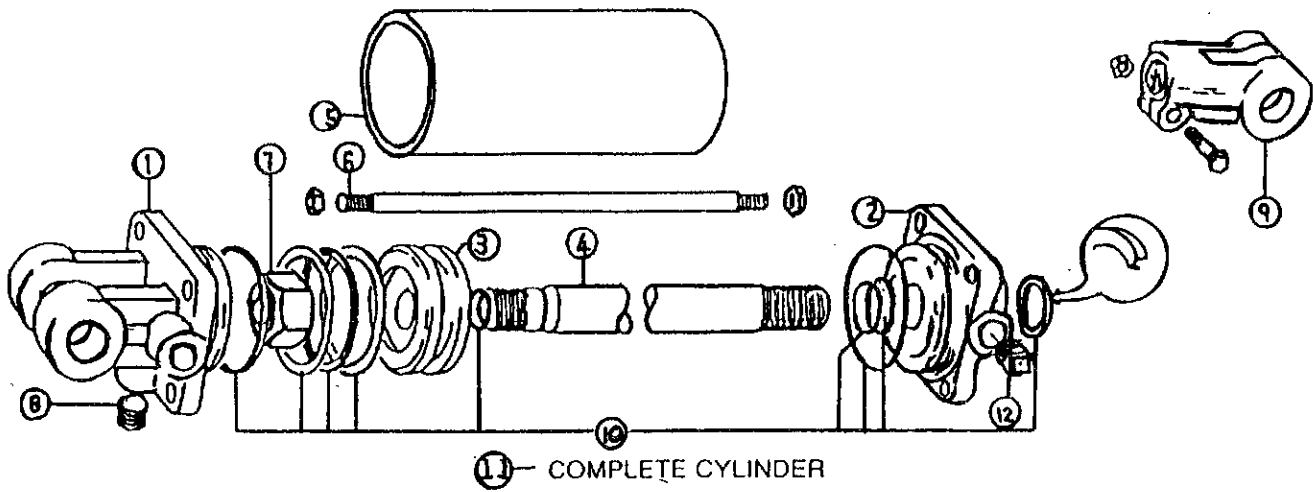


**FIGURE 8  
H&S TWIN MERGER OPTIONAL GATHERING WHEEL**

<b>ITEM</b>	<b>PART NO.</b>	<b>DESCRIPTION</b>
1.	DWM178	Mounting Plate Hex Backup
2.	DWM179	Rubber Wheel
3.	F16	Lock Collar
4.	BFR525	Bearing
5.	DWM180	Shaft Assembly
6.	DWM181	Rubber Wheel Shaft
7.	DWM182	Right Indexing Tube
*	DWM183	Left Indexing Tube
8.	DWM184	Right Pivot Tube Assembly
*	DWM185	Left Pivot Tube Assembly
9.	DWM186	Pin
10.	DWM191	3/8"x2-3/4" Snapper Pin
11.	DWM187	Right Wheel Mount Bracket
*	DWM188	Left Wheel Mount Bracket
12.	DWM189	Chain
13.	DWM190	5/16" Anchor Shackle
14.	BFR9	5/16"x2" Bolt
15.	D81	5/16" Lock Nut

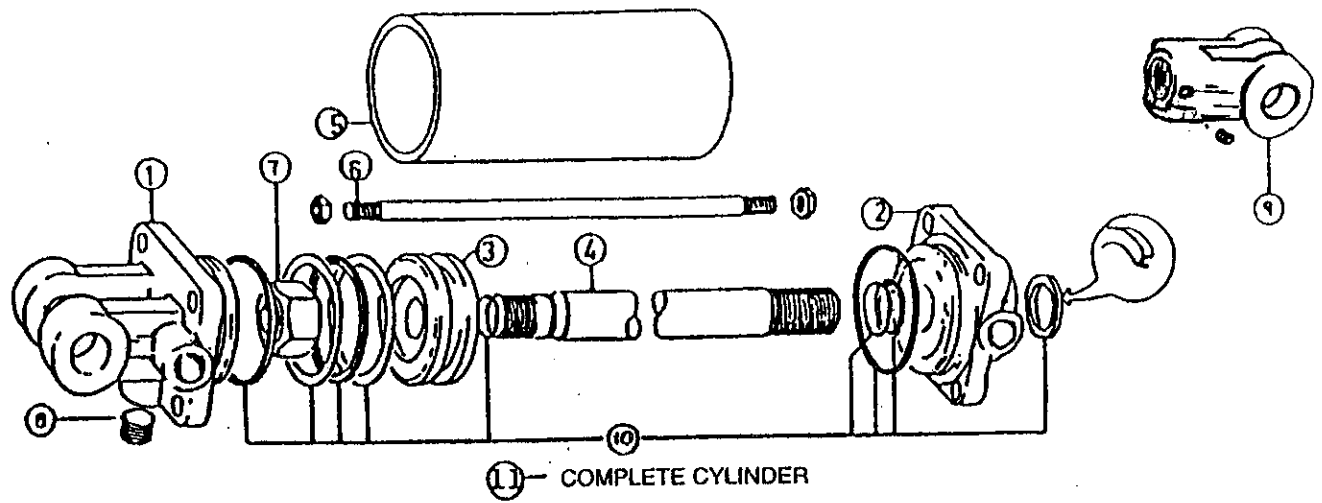
**NOTE:** Right Hand Shown

**\* (Means Not Shown)**



**FIGURE 9  
HYDRAULIC CYLINDER 8"**

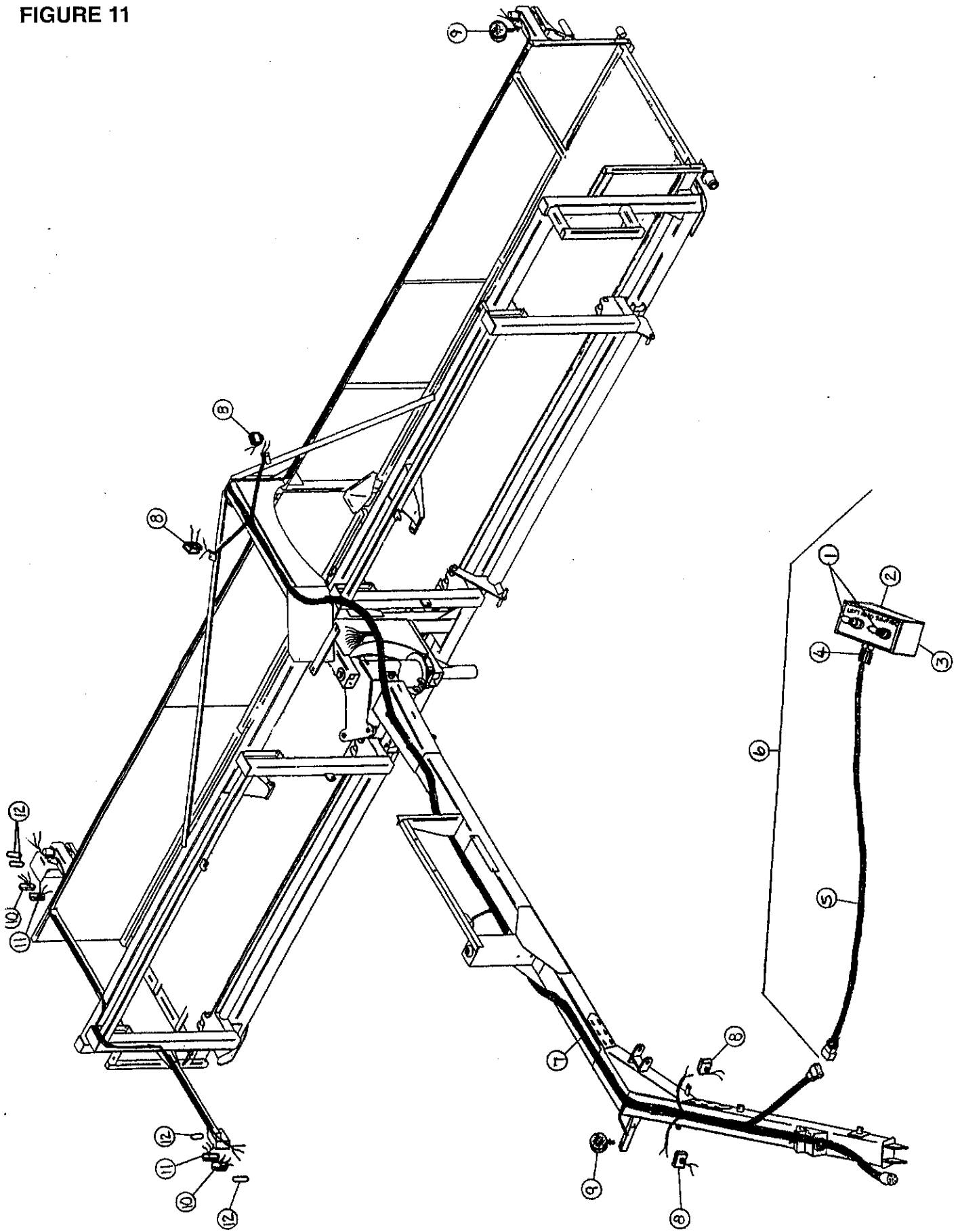
ITEM	PART NO.	DESCRIPTION
1.	23N142	Clevis
2.	23N143	Rod Cap
3.	23N144	Piston
4.	T134	Rod
5.	BFR68	Cylinder Tube
6.	T186	Tie Rod
7.	23N148	Piston Nut
8.	23N149	Plug
9.	23N150	Rod Clevis
10.	23N151	Seal Kit
11.	BFR69	Complete Cylinder
12.	BFR70	Clip Pin



**FIGURE 10**  
**H&S TWIN MERGER HYDRAULIC CYLINDER 30"**

ITEM	PART NO.	DESCRIPTION
1.	DWM192	Clevis Cap
2.	DWM193	Rod Cap
3.	DWM194	Piston
4.	DWM195	Rod
5.	DWM196	Cylinder Tube
6.	DWM197	Tie Rod
7.	DWM198	Piston Nut
8.	DWM199	Plug
9.	DWM200	Rod Clevis
10.	DWM201	Seal Kit
11.	DWM75	Complete Cylinder

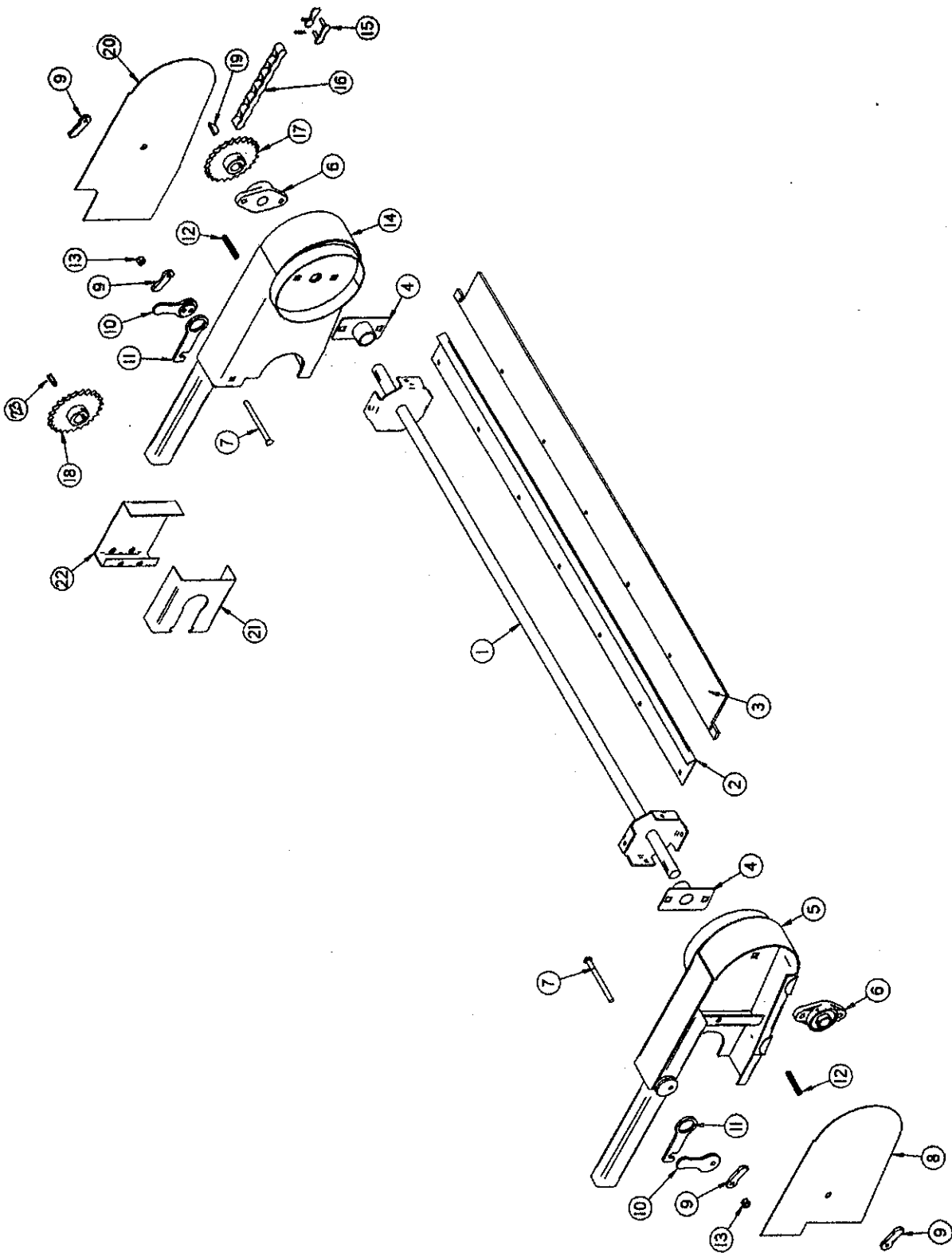
FIGURE 11



**FIGURE 11**  
**H&S TWIN MERGER ELECTRIC WIRING HARNESS**

<b>ITEM</b>	<b>PART NO.</b>	<b>DESCRIPTION</b>
1.	DWM174	Joy Stick & Switch
2.	DWM139	Control Box Top
3.	DWM140	Control Box Bottom
4.	DWM175	Strain Relief
5.	DWM176	Cord
6.	DWM167	Complete Optional Electric Head Control Box
7.	DWM165	Main Wiring Harness
8.	DWM130	Flood/Work Lights
9.	DWM129	Yellow Hazard Lights
10.	DWM131	Yellow Tail Lights
11.	S310	Red Tail Lights
12.	S308	Rubber Light Mount

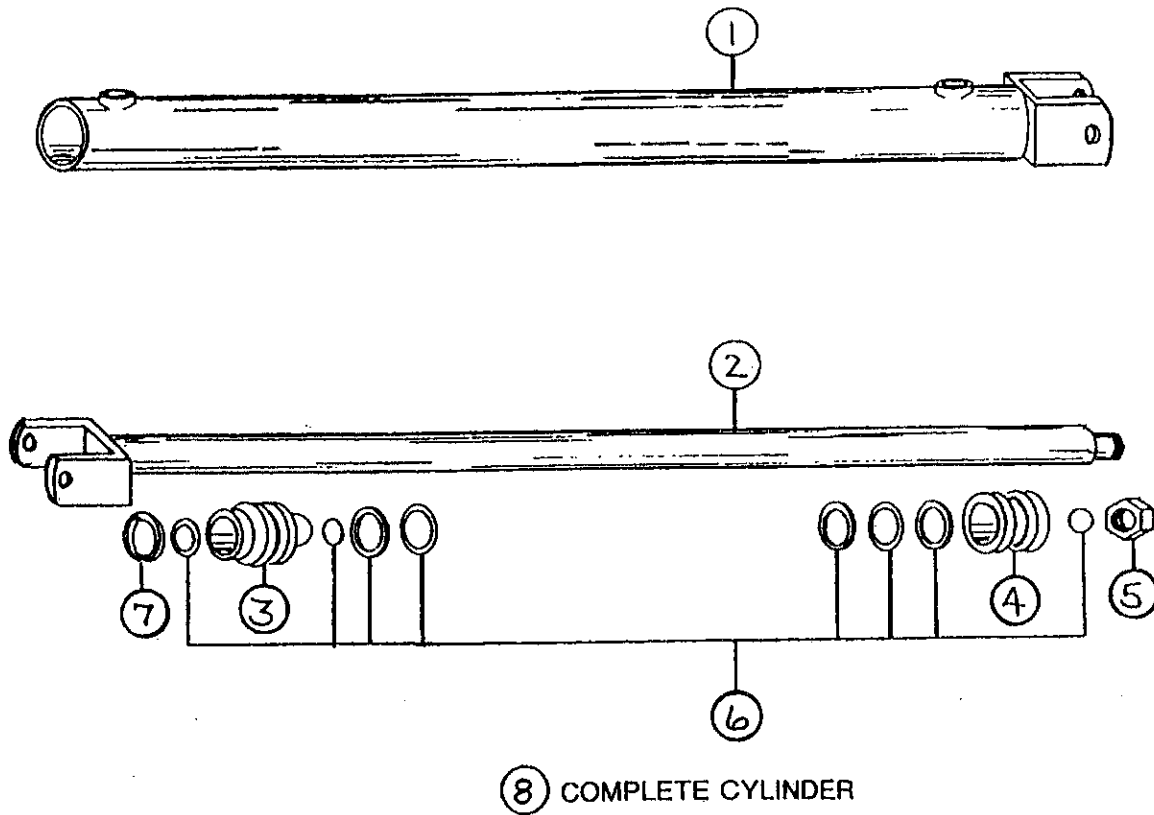
FIGURE 12



**FIGURE 12  
H&S TWIN MERGER OPTIONAL ACCELERATOR**

<b>ITEM</b>	<b>PART NO.</b>	<b>DESCRIPTION</b>
1.	DWM207	Accelerator Shaft
2.	DWM212	Accelerator Plate
3.	DWM220	Rubber
4.	DWM211	Wrap Guard
5.	DWM208	Mounting Bracket 1
6.	DWM221	1" Bearing
7.	DWM222	3/8"x5-1/2" Carriage Bolt GR.2
8.	DWM214	Shield 1
9.	DWM219	Handle Nut
10.	DWM210	Latch Handle
11.	DWM217	Latch
12.	DWM218	Ready Rod
13.	A14	3/8" Nylock Nut
14.	DWM209	Mounting Bracket 2
15.	X61	#50Connector Link
16.	ST29	#50 Roller Chain 61 Pitch
17.	X106	Sprocket 24T 1" Bore
18.	S82	Sprocket 24T 1-1/4" Bore
20.	DWM213	Shield
21.	DWM216	Sprocket Shield Back
22.	DWM215	Sprocket Shield
23.	S135	1/4"x1-1/4" Sq. Key

**NOTE: Left Hand Shown**



**FIGURE 13**  
**H&S TWIN MERGER OPTIONAL HYDRAULIC HEAD CYLINDER**

ITEM	PART NO.	DESCRIPTION
1.	DWM202	Case Weldment
2.	DWM203	Rod Weldment
3.	BFR330	Head Gland
4.	BFR331	Piston
5.	BFR332	Jam Nut
6.	BFR333	Seal Kit
7.	BFR334	Snap Ring
8.	DWM152	Complete Cylinder





- SERVICE NOTES -

Lined area for service notes.